

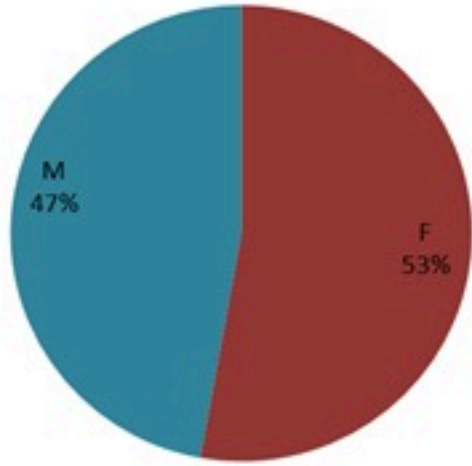
ترصد الكوليرا في لبنان 22 كانون الثاني 2023

الجمهورية اللبنانية
وزارة الصحة العامة
برنامج الترصد الوبائي

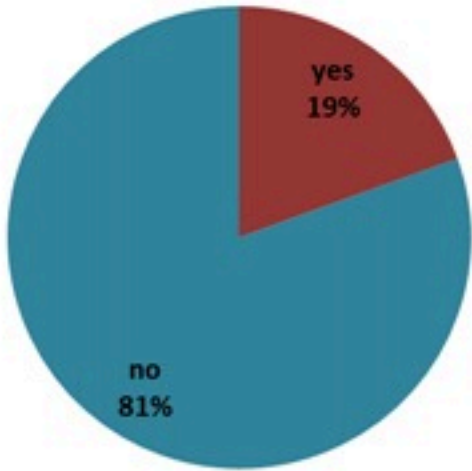


الخطوط الساخنة

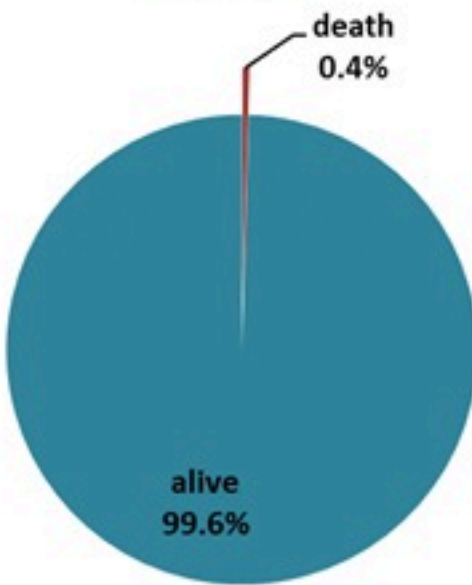
1760 (الصليب الأحمر)
1787 (وزارة الصحة)



حسب الجنس
(المشبهة والمتبنة)



حسب الاستشفاء
(المشبهة والمتبنة)



حسب تطور الحالة
(المشبهة والمتبنة)

الوفيات (المتبنة)		الحالات المثبتة		كافة الحالات المشبهة والمتبنة	
التراكمي	الجديدة (آخر 24 ساعة)	التراكمي	الجديدة (آخر 24 ساعة)	التراكمي	الجديدة (آخر 24 ساعة)
23	0	671	0	6254	4



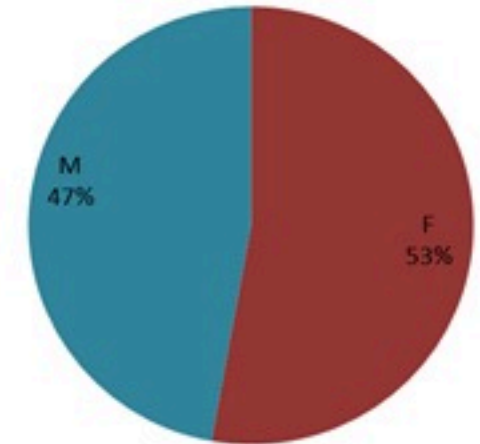
Cholera Surveillance Report

22 Jan 2023

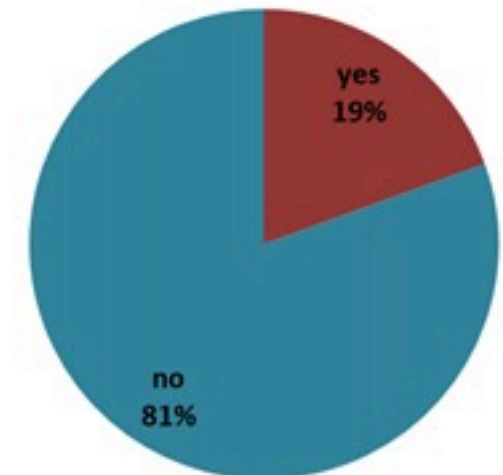
Call Centers
 1760 (Red Cross)
 1787 (MOPH)

All cases (suspected and confirmed)		Confirmed Cases		Deaths (confirmed)	
New (past 24 h)	Cumulative	New (past 24 h)	Cumulative	New	Cumulative
4	6254	0	671	0	23

By Sex
(suspected and confirmed)



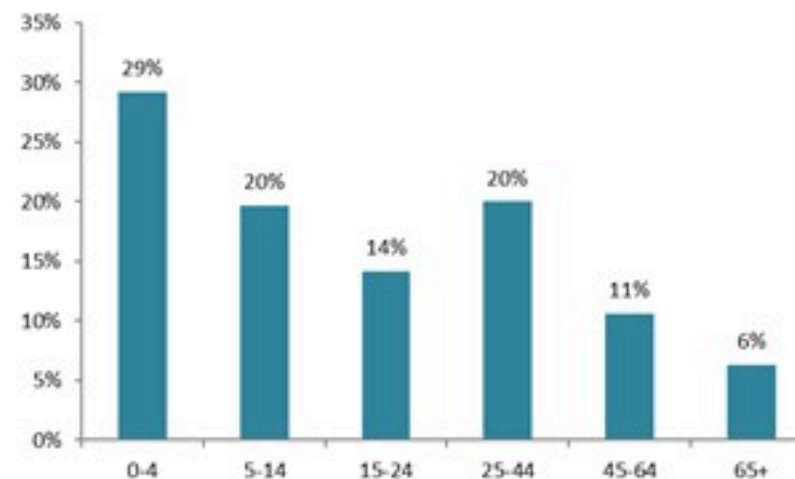
By Hospital Admission
(suspected and confirmed)



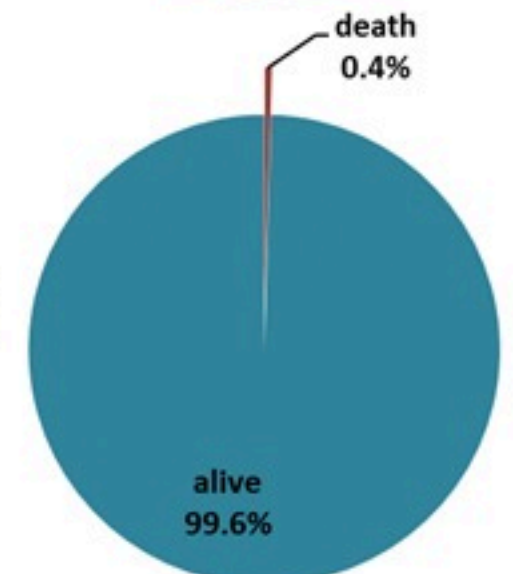
By locality (confirmed cases)



By age group
(suspected and confirmed cases)



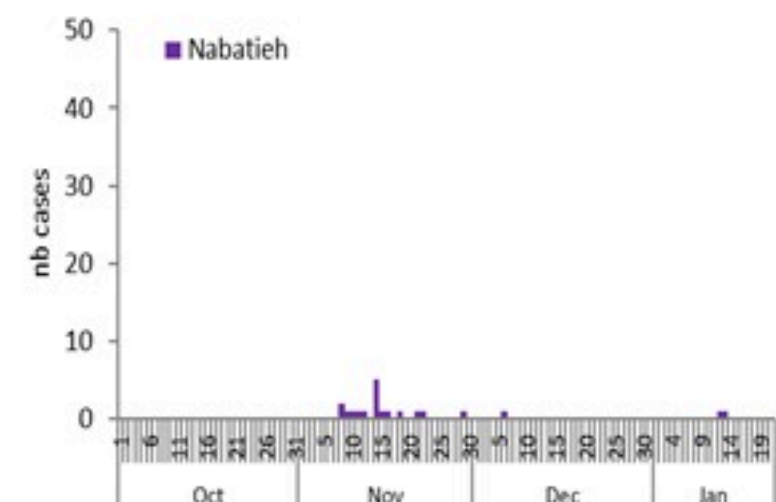
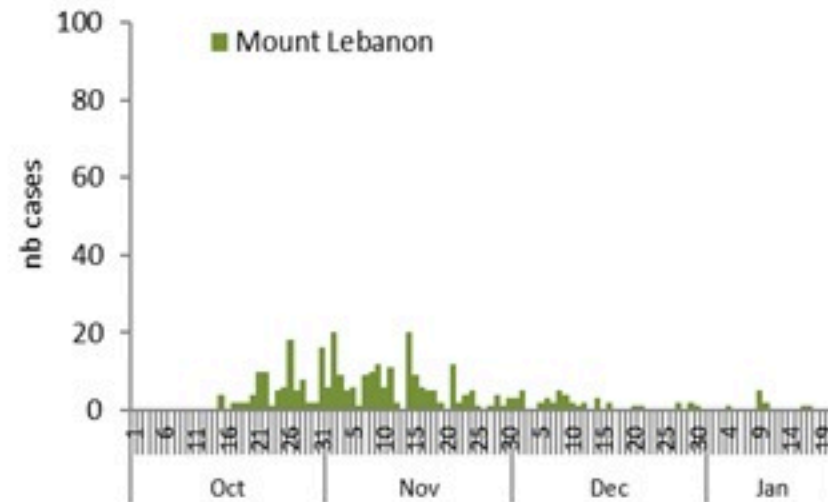
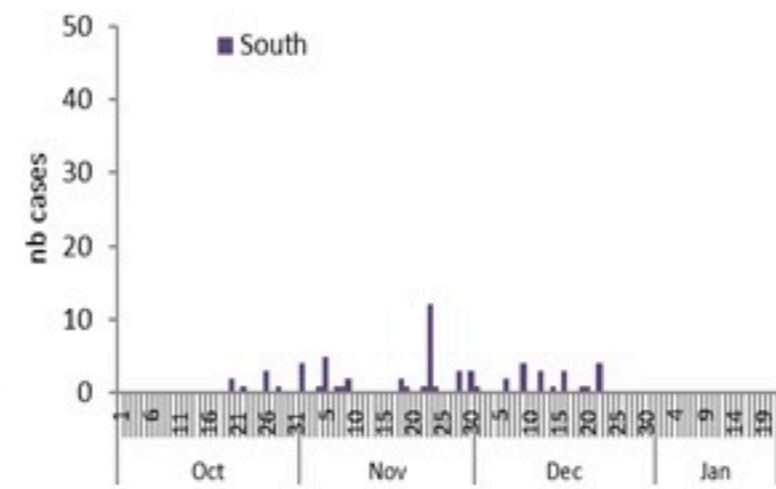
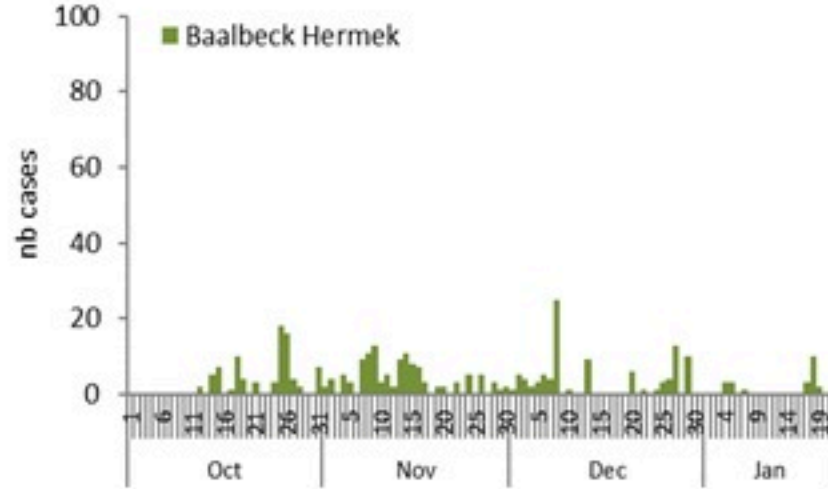
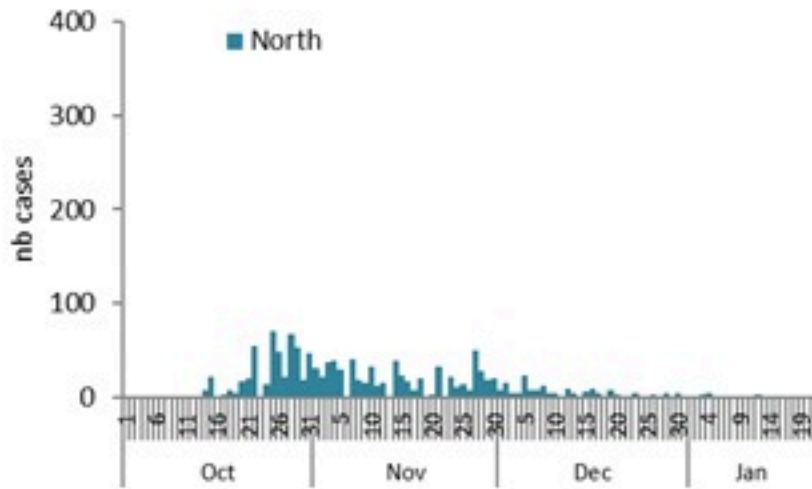
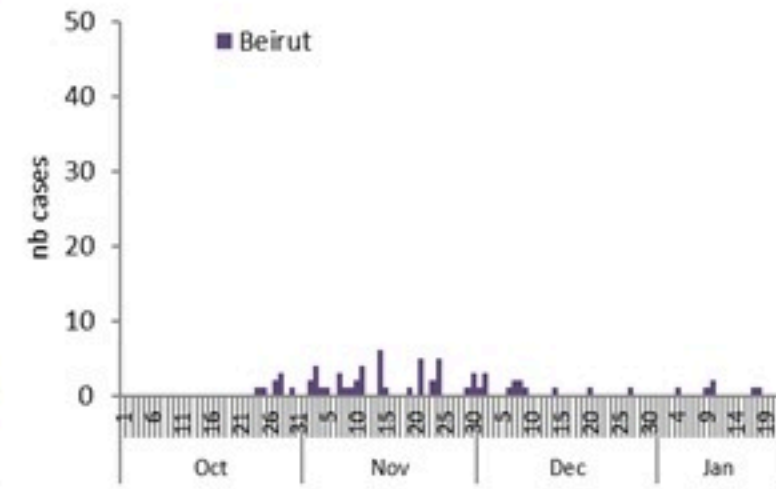
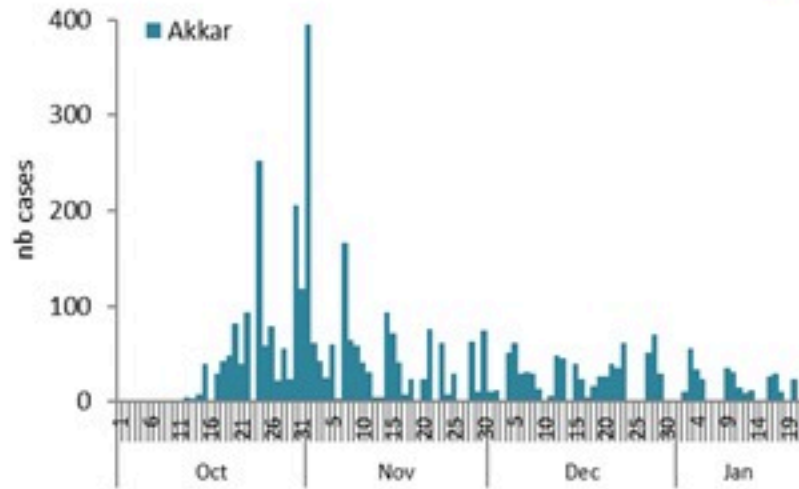
By Outcome
(suspected and confirmed)



22 Jan 2023

Epicurves by date of reporting by province

(suspected and confirmed)



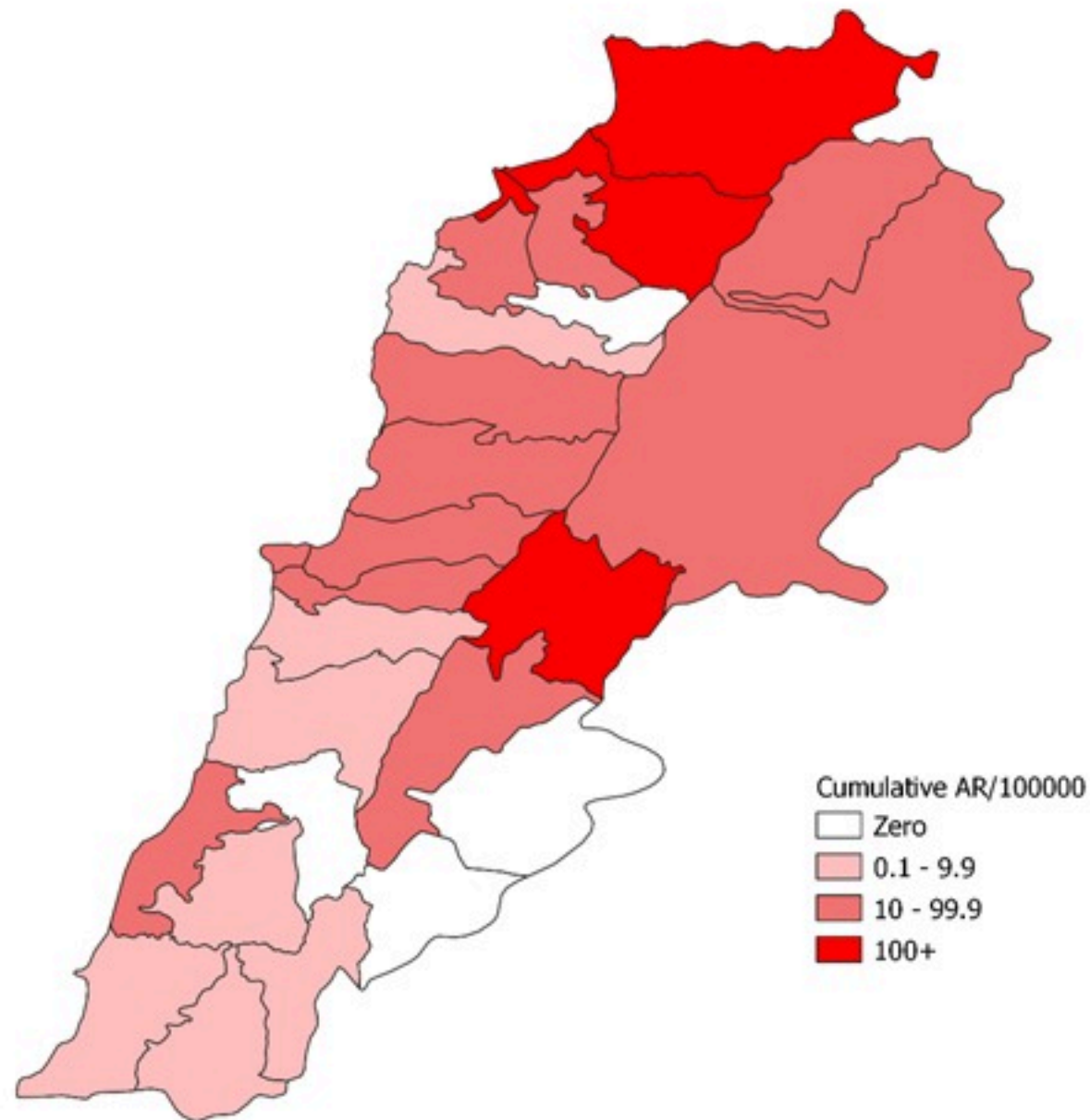
Cholera Surveillance Update

22 Jan 2023

4

Cumulative Attack Rate per 100,000 (suspected and confirmed)

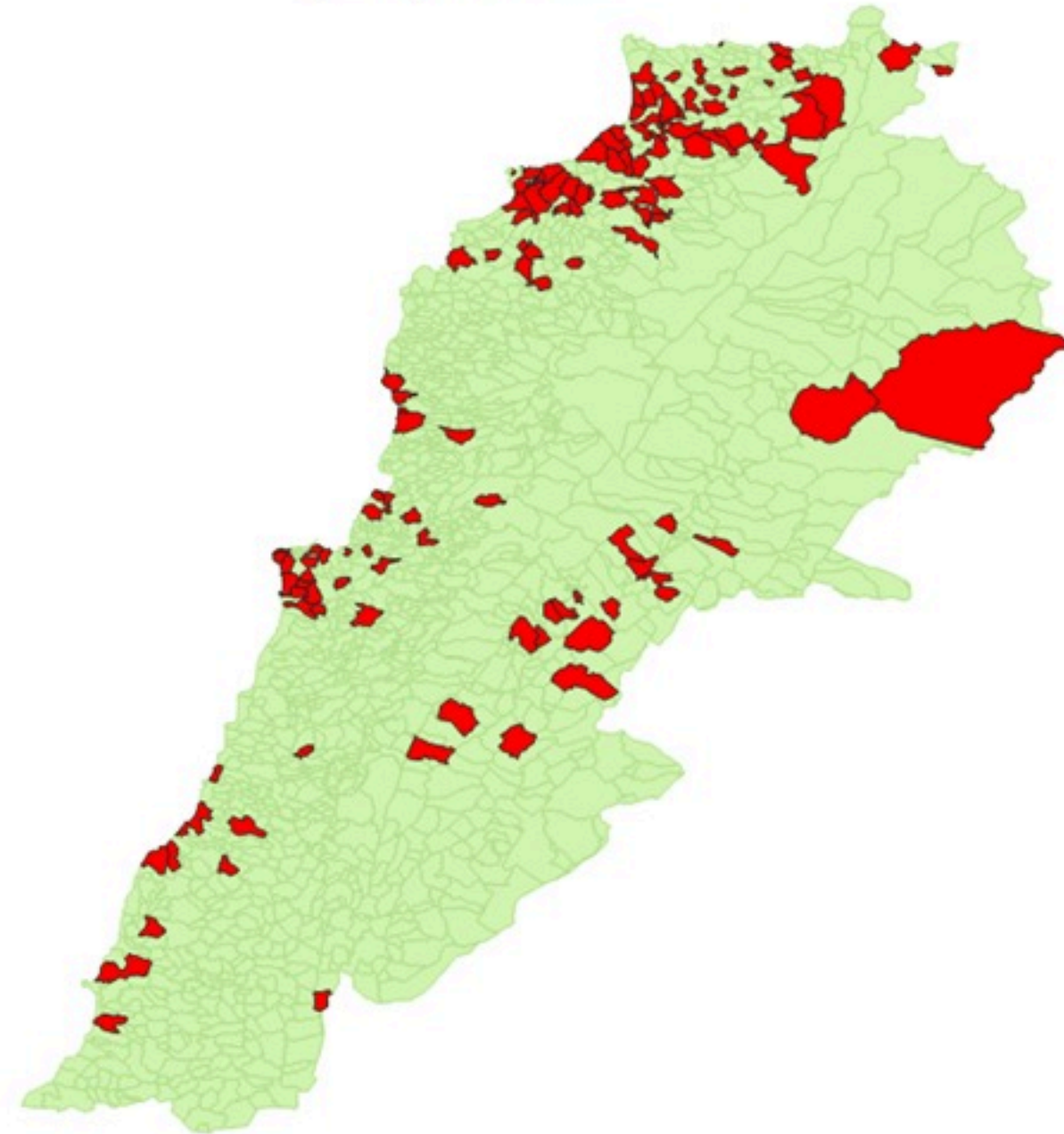
نسبة الحدوث التراكمية لكل مئة ألف نسمة (الحالات المشتبهية والمثبتة)



Cholera Surveillance Update

22 Jan 2023

By locality (confirmed)
حسب البلدة (المتبنة)



Figures in table are subject to modification following updates and data correction

Caza	Locality	Cases	Caza	Locality	Cases	
Akkar	Akkar Atika	1	Kiswan	Aintouna	1	
	Amayer/Quadi Khaled	1		Balfounh	1	
	Arqa / Marlayet Haddara	2		Bqatouta	7	
	Bebnine / Baddoua	16		Ghair	2	
	Beit Hajj/Koucha/Khreibit Jindi	1		Jounieh Ghadir	4	
	Bergayel	1		Jounieh Sabra	4	
	Bezbina	1		Yahchouch	1	
	Birch	2		Zouk Mosbeh	3	
	Bqerzia	1		Kouna	Aaba	1
	Cheikh Ayache / Chir Hmairine	1			Aufdiq	1
	Dahr Qambar /Hokr Qatteh	1	Basa		1	
	Dabadab	1	Bsama		1	
	Dinbou	2	Dahr Ain / Ras Masqua		1	
	Fneydek	2	Rachdibbine		1	
	Halba	1	Kfar Aqa		1	
	Hayssa	1	Aadayssah		1	
	Hocouich	1	Marjoun		Biklaya	1
	Jdeidat Qaytee	1			Broummata	1
	Kfar Harra	4		Bsalim	1	
	Kfar Melki	1		Daruna/Borj Hammoud	2	
	Khane Hayat	1		Mansourieh	3	
	Khirbet Char	2		Zalqa	1	
	Kneisset Hnaldar	1		Minieh Danieh	Aadoua	1
	Kouachra	1			Assoun	4
	Koukikhat	2			Ain El Timh	1
	Machha	2			Bahsa	1
	Majdala	1	Bakhaoum		4	
	Memneaa	1	Bhanine / Zouk Bhanine		7	
	Mhamarah / Nahr Bared / Abdeh	22	Bamar		6	
	Minlara	1	Douniya		1	
	Mqyatea	1	Kfar Chollane		2	
	Quadi Jamous	11	Kfar Habou		1	
	Qaabrine / Tal Hayat	1	Makabta	2		
	Qbalyat	1	Minieh	Minieh	18	
	Qlayat Akkar	2		Qouatiyeh	1	
	Qobet Chamra	17		Qatime	3	
	Rahbeh	1		Rihanieh	35	
	Ransiyeh / Deir Dalloum	1		Sir Danieh	5	
	Saadine	4		Saïda	Aanqoun	1
	Tell Abbas Charqui	2			Bissariyeh	4
Tieil	1	Ghazieh			2	
Zouq Haddara	1	Khawayeb			3	
Zouq Hosnieh	1	Saïda			1	
Aley	Aley	1	Sawfand		1	
	Hay Selloum/Chouifat	1	Sour		Abbassiyeh	1
Baalbek	Ain Roummaneh	1			Deir Qaroun Ain	4
	Borj Brajneh	3	Baddawi		Baddawi	16
	Ghbayroh/Chiyah/Sabra	2			Mina	7
	Hadath	1	Qobbah	21		
	Haret Hireik	1	Tripoli	Tripoli Bab Raml	1	
	Kfar Chima	1		Tripoli Gardans	2	
Mrejjih	2	Tripoli Haddadine		1		
Baalbeck	Arsal	27		Tripoli Nouri	1	
	Kfar Dabache	2		Tripoli Souayqa / Jsrain	3	
	Khodr	2		Tripoli Tabbaneh	21	
	Temnine Faouqa	1	Tripoli Zaitoun	15		
	Temnine Tahta	1	West Beqaa	Kamel Jaruz	1	
Younine	1	Kufaya		1		
Batroun	Chikka	1		Saghbine	1	
	Achrafieh	2		Zahleh	Aali Nahri	2
Beirut	Ain Miralsseh	1			Bar Elias	2
	Hamra	1			Dalhamieh	2
	Mdsouar / Mar Mikhael	1			Harouch Mandra	1
	Msaïtbeh	1			Hawch Omara	7
	Chouf	Zaarouriyeh			1	Majdal Anjar
Jbeil		Amchit			1	Qob Elias
		Ehmej	1		Raait	11
		Fidar	1		Saadinayd	11
		Halate	1		Talabaya	2
	Jbeil	1	Zahleh Madaka	2		
Mastita	1	Zghorta	Aalma	1		
Zghorta	Andeh		1	Kfar Drazous	2	
	Kfar Drazous		2	Majdalya Zghorta	7	
	Majdalya Zghorta		7	Mirata / Fozur	3	
	Mirata / Fozur		3	Sebwa	1	
	Sebwa		1	Zghorta	5	
	Zghorta	5				