

الخطوط الساخنة

1760 (الصليب الأحمر)
1787 (وزارة الصحة)

ترصد الكوليرا في لبنان 16 تشرين الثاني 2022

الجمهورية اللبنانية
وزارة الصحة العامة
برنامج الترصد الوبائي



حملة التلقيح ضد الكوليرا

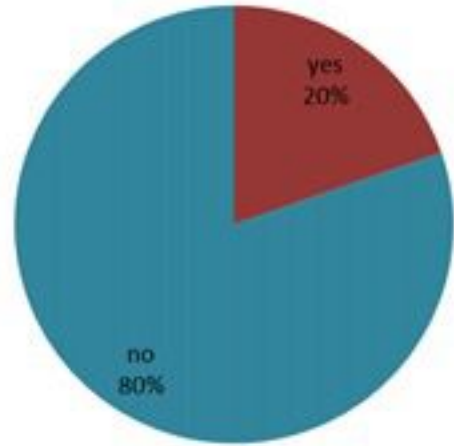
العدد التراكمي للجرعات لتاريخ امس

التراكمي

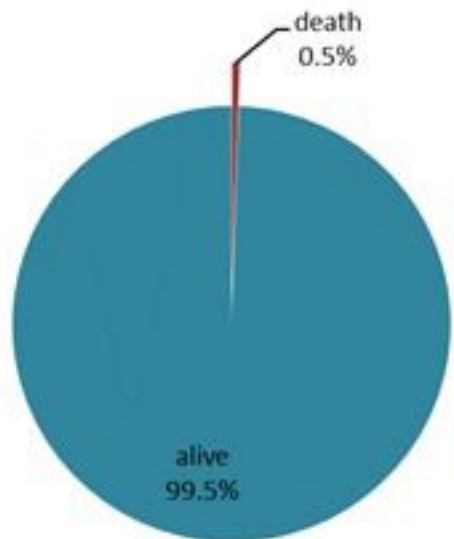
جرعات يوم امس

129,118

39,177

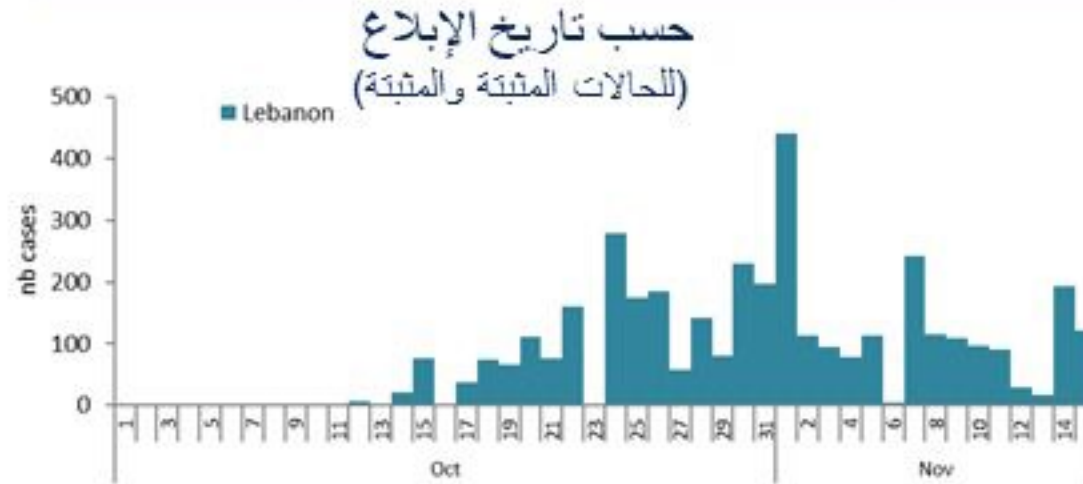


حسب الاستشفاء
(المشبهة والمتبنة)



حسب تطور
الحالة
(المشبهة والمتبنة)

الوفيات (المتبنة)		الحالات المثبتة		كافة الحالات المشبهة والمتبنة	
التراكمي	الجديدة (آخر 24 ساعة)	التراكمي	الجديدة (آخر 24 ساعة)	التراكمي	الجديدة (آخر 24 ساعة)
19	0	567	7	3671	108



عدد الاسرة
المستعملة
(للحالات المشبهة
والمتبنة)
73

حسب البلدة
(للحالات المثبتة)



Cholera Surveillance Report

16 Nov 2022

Call Centers
 1760 (Red Cross)
 1787 (MOPH)

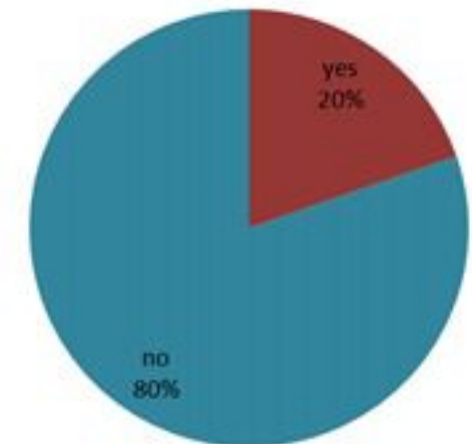
All cases (suspected and confirmed)		Confirmed Cases		Deaths (confirmed)	
New (past 24 h)	Cumulative	New (past 24 h)	Cumulative	New	Cumulative
108	3671	7	567	0	19

Cholera Vaccination Campaign (Cumulative of delivered doses up to past day)	
Past day	Cumulative
39,177	129,118

**Total occupied
beds
(suspected/
confirmed)**
73



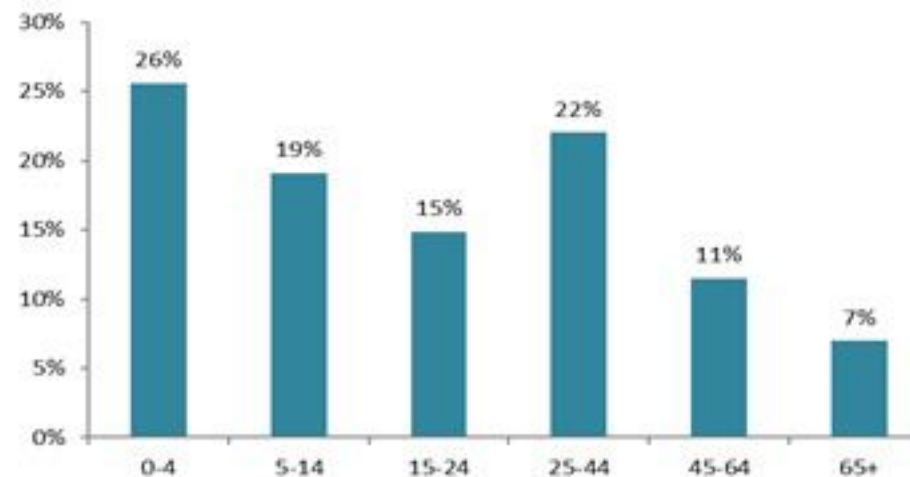
By Hospital Admission
(suspected and confirmed)



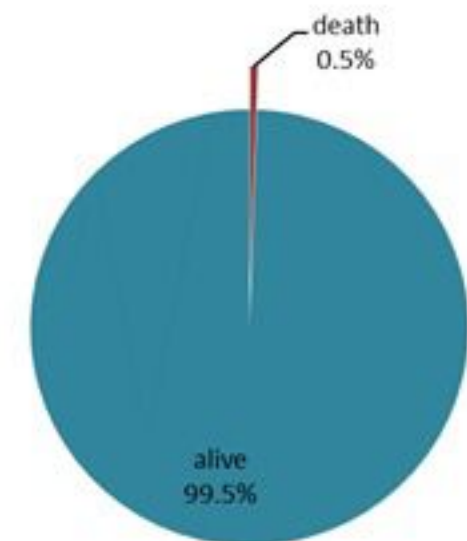
By locality (confirmed cases)



By age group
(suspected and confirmed cases)



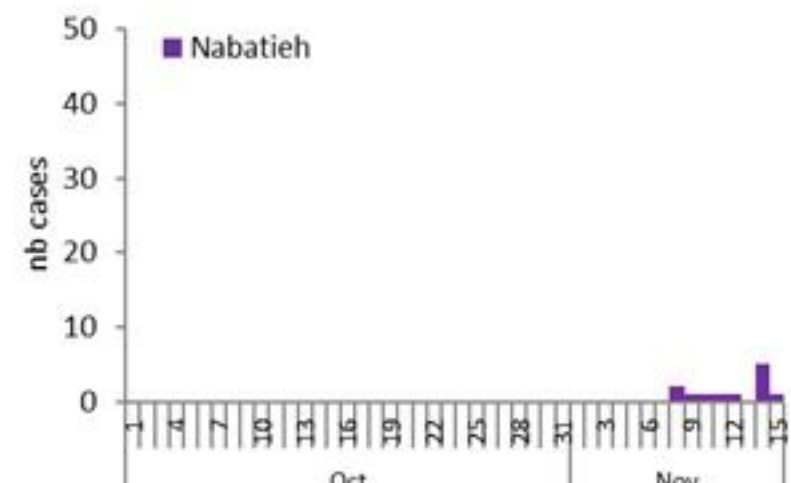
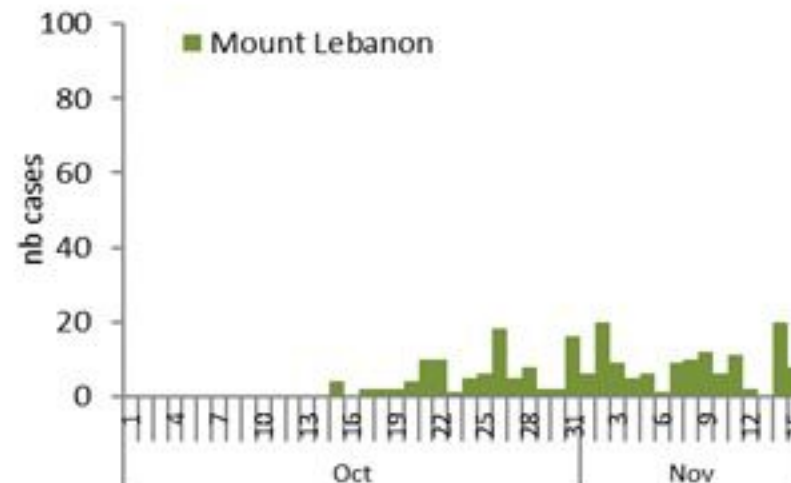
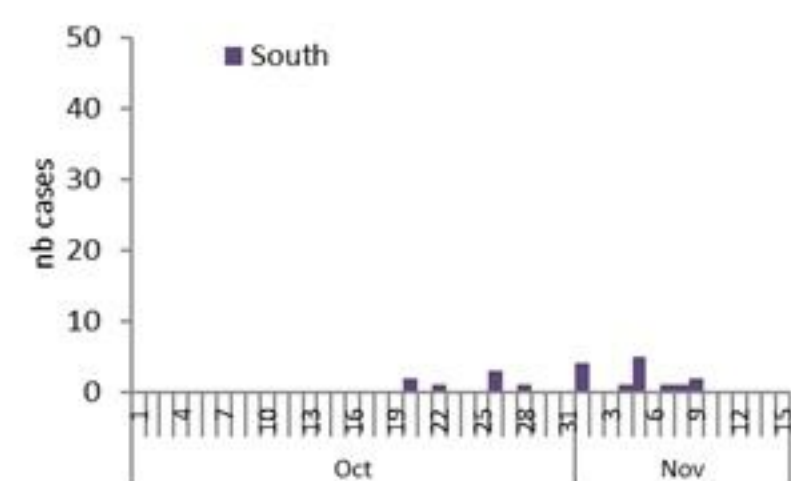
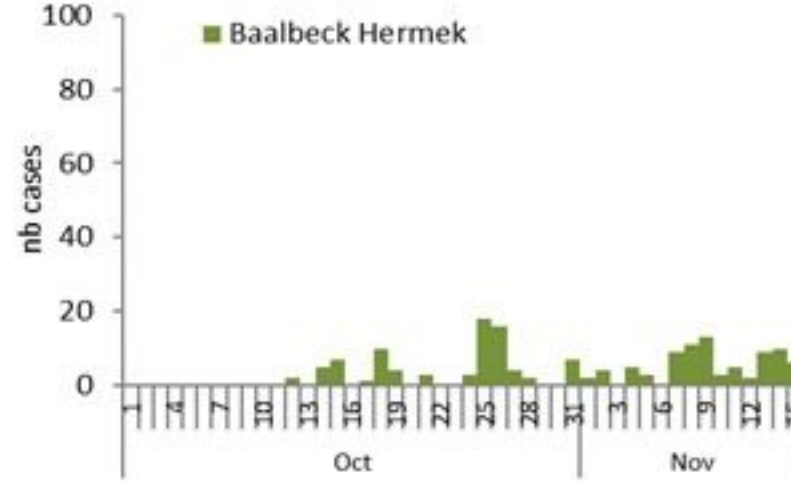
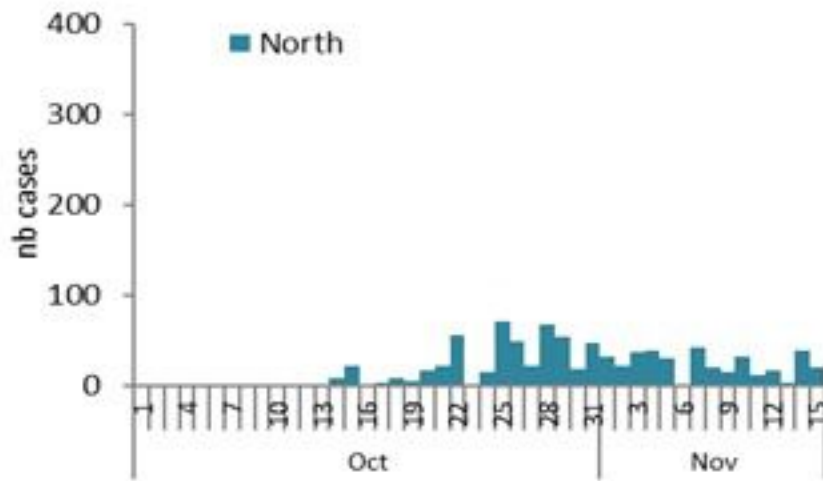
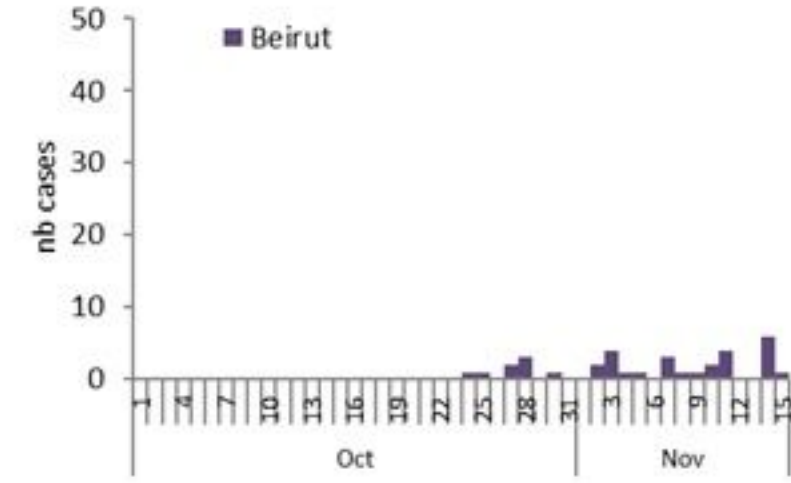
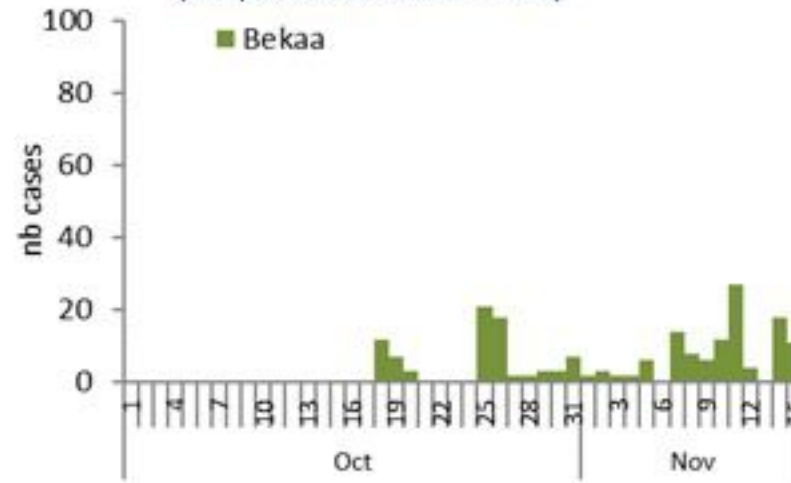
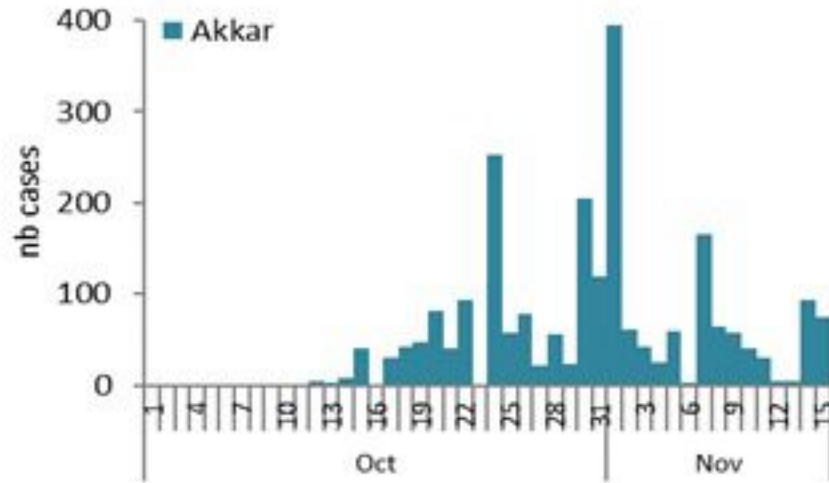
By Outcome
(suspected and confirmed)



Cholera Surveillance Report

16 Nov 2022

Epicurves by date of reporting by province (suspected and confirmed)



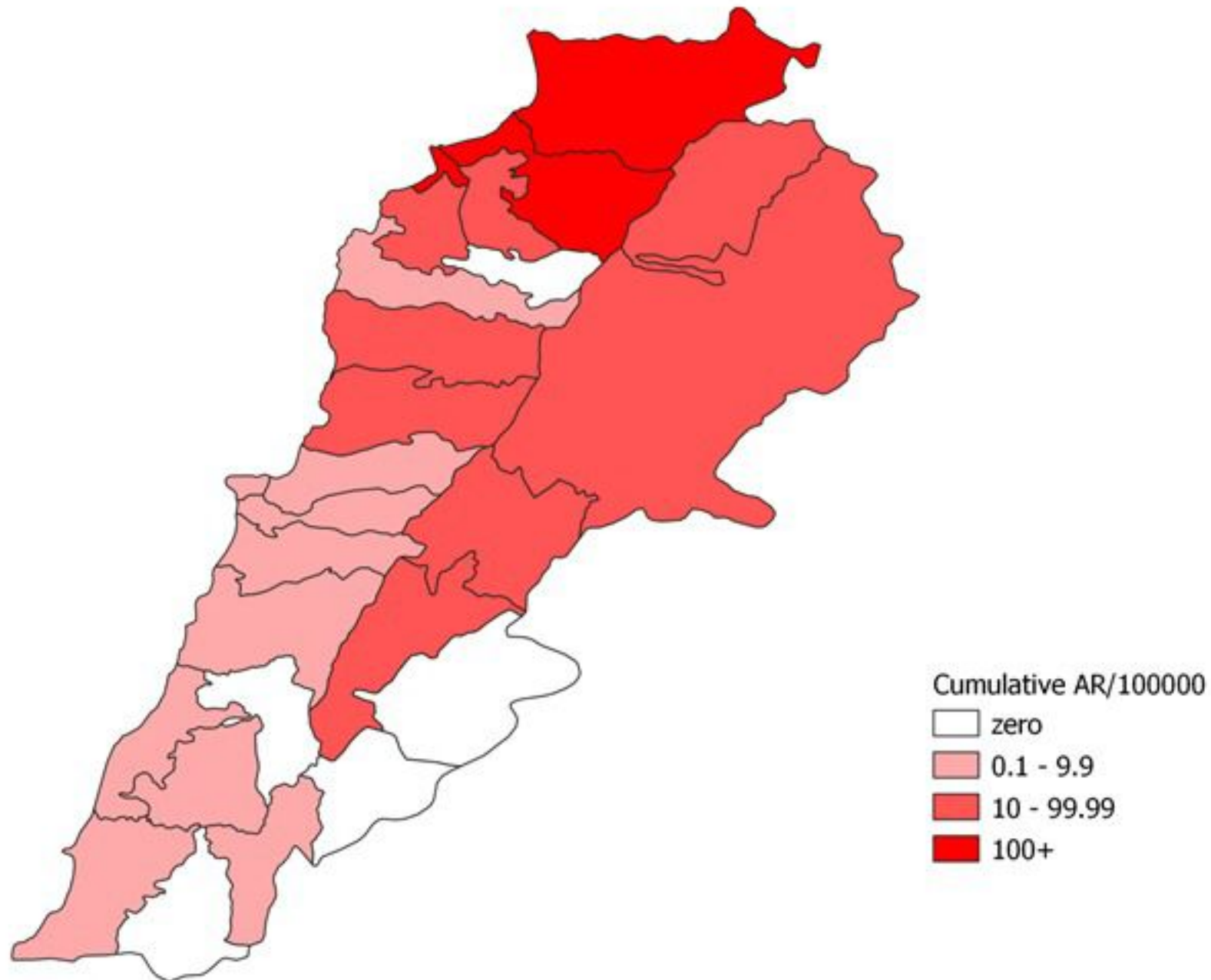
Cholera Surveillance Update

16 Nov 2022

4

Cumulative Attack Rate per 100,000 (suspected and confirmed)

نسبة الحدوث التراكمية لكل مئة ألف نسمة (الحالات المشتبهية والمثبتة)

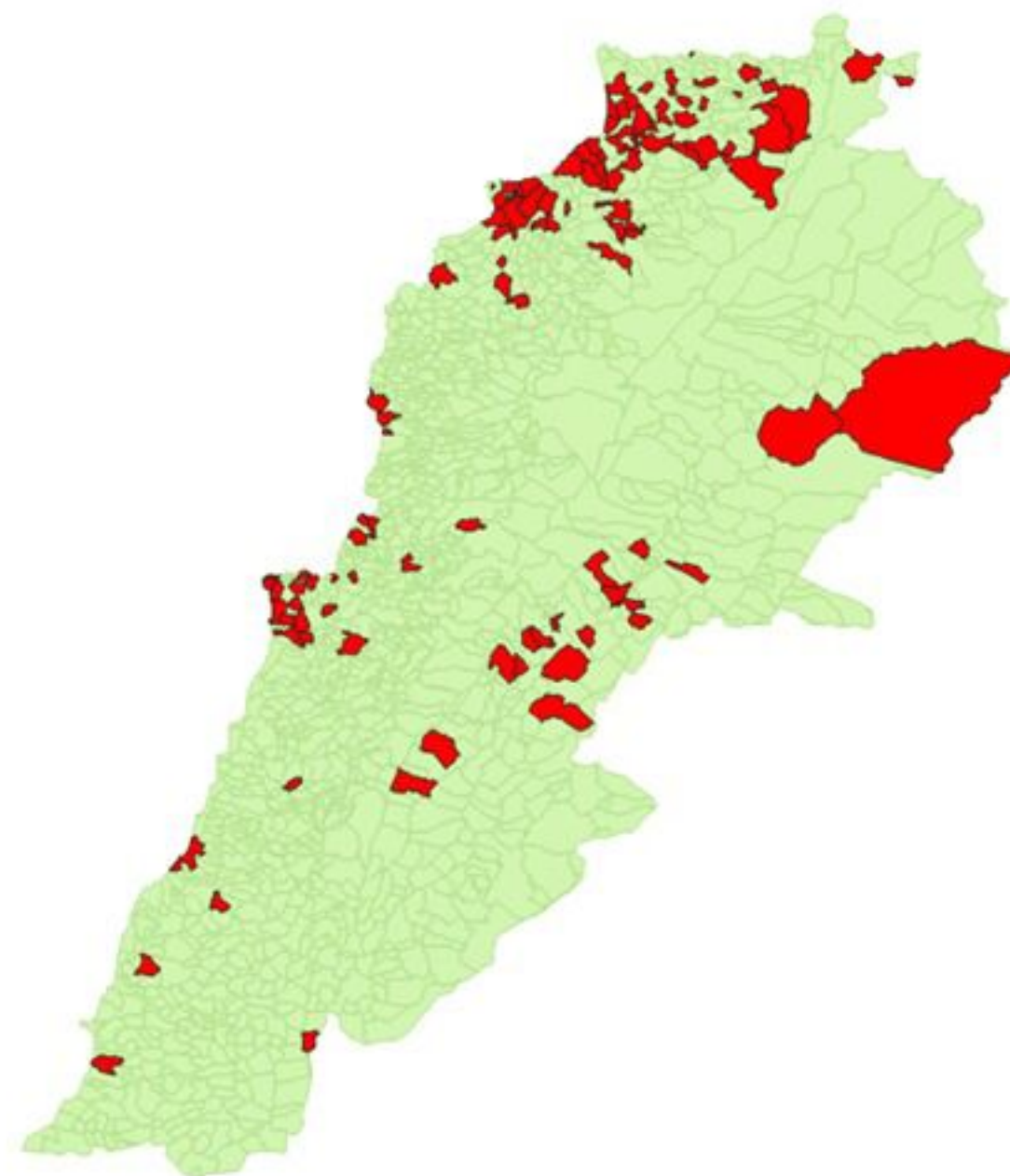


Cholera Surveillance Update

16 Nov 2022

5

By locality (confirmed)
حسب البلدة (المتبئة)



Figures in table are subject to modification following updates and data correction

Caza	Locality	cases	Caza	Locality	cases
Akkar	Akkar Atika	1	Kesrwan	Aintoura	1
	Amayer/Duadi Khaled	1		Bqaatouta	7
	Arqa / Marlayet Haddara	2		Ghazir	2
	Bebnine / Baddoua	140		Jounieh Ghadir	4
	Beit Hajj/Koucha/Khreibit Jindi	3		Jounieh Sarba	4
	Berqayel	5		Zouk Mosbeh	3
	Bezrina	1	Koura	Aaba	1
	Bireh	2		Barsa	1
	Bqerzla	1		Dahr Ain / Ras Masqua	1
	Cheikh Ayache / Chir Hmainine	3		Rechdibbine	1
	Dahr Qambar /Hokr Qatteh	2		Kfar Aqa	1
	Fneydek	1	Marjeoun	Aadaysseh	1
	Halba	1	Metn	Bikfaya	1
	Hayssa	1		Bsolim	1
	Hoeuich	3		Daoura/Borj Hammoud	2
	Jdeidat Qaytee	3		Mansourieh	2
	Kfar Harra	4		Zalqa	1
	Kfar Melki	1	Minieh Danieh	Aadoua	1
	Khirbet Char	2		Assoun	4
	Kneisset Hnaider	1		Ain El Tineh	1
	Kouachra	1		Bahsa	1
	Koueikhat	2		Bakhaaoun	4
	Machha	2		Bhanine / Zouk Bhanine	6
	Majdala	2		Douraiya	1
	Memneaa	1		Kfar Chellane	2
	Mhamarah / Nahr Bared / Abdeh	13		Merkebta	2
	Miniara	3		Minieh	15
	Mqyatea	1		Ouatiyeh	1
	Ouadi Jamous	7		Qattine	3
	Qaabrine / Tal Hayat	7		Rihanieh	35
	Qbaiyat	1		Sir Dannieh	4
	Qlayat Akkar	2	Nabatieh	Zafta	1
	Qabet Chamra	16	Saida	Ghazieh	2
	Rahbeh	1		Kharayeb	3
	Ransiyeh / Deir Dalloum	1	Sour	Deir Qanoun Ain	4
	Saadine	4		Baddawi	13
	Tell Abbas Charqui	2		Mina	4
	Tleil	1		Qobbeh	18
	Zouq Haddara	1	Tripoli	Tripoli Bab Raml	1
	Zouq Hosnieh	3		Tripoli Gardens	1
Aley	Aley	1		Tripoli Haddadine	1
	Hay Selloum/Choueifat	1		Tripoli Nouri	1
Baabda	Borj Brajneh	3		Tripoli Souayqa / Jisrain	3
	Ghbayreh/Chiyah	1		Tripoli Tabbaneh	19
	Hadath	3		Tripoli Zeitoun	4
	Kfar Chima	1	West Beqaa	Kefraya	1
	Mrejith	1		Saghbine	1
Baalbeck	Arsal	27	Zahleh	Aali Nahri	1
	Kfar Dabache	2		Bar Elias	2
	Khodr	2		Dalhameh	1
	Temnine Faouqa	1		Haouch Mandra	1
	Temnine Tahta	9		Hawch Omara	7
	Younine	1		Majdal Anjar	1
Batroun	Chikka	1		Qob Elias	9
Beirut	Achrafieh	2		Raait	8
	Ain Mraisseh	1		Saadnayel	11
	Hamra	1		Taalabaya	2
	Mdaouar / Mar Mikhael	1		Zahleh Maalaka	2
	Msaitbeh	1	Zghorta	Aalma	1
Chouf	Zaarouriyeh	1		Kfar Dlaqous	2
Jbeil	Amchit	1		Mejdalya Zghorta	6
	Ehmej	1		Miriata / Faour	3
	Jbeil	1		Zghorta	4
	Mastita	2			