

الخطوط الساخنة

1760 (الصليب الأحمر)
1787 (وزارة الصحة)

ترصد الكوليرا في لبنان 1 كانون الاول 2022

الجمهورية اللبنانية
وزارة الصحة العامة
برنامج الترصد الوبائي



حملة التلقيح ضد الكوليرا

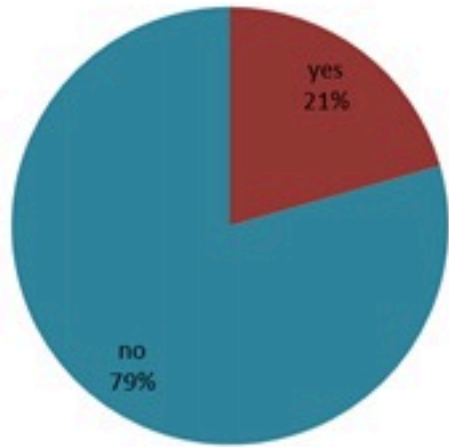
العدد التراكمي للجرعات لتاريخ امس

التراكمي
(بعد التصحيح)

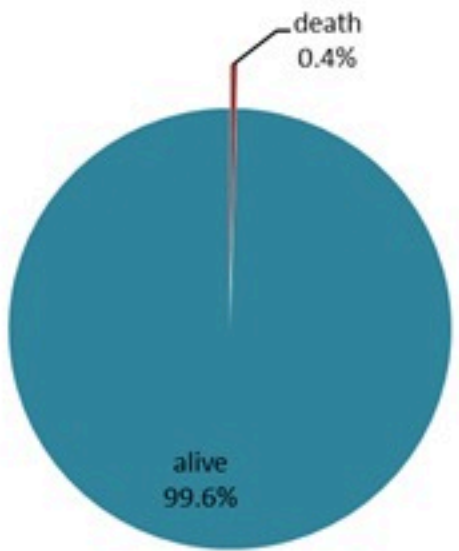
ليوم امس

457,251

13,110



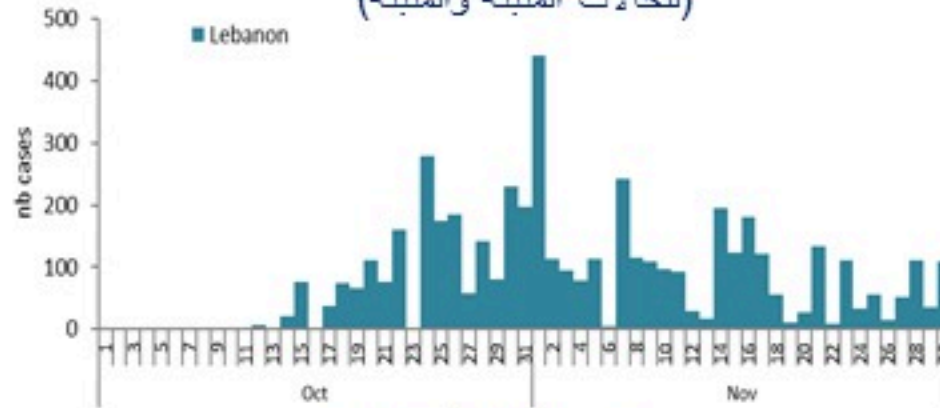
حسب الاستشفاء
(المشبهة والمتبنة)



حسب تطور
الحالة
(المشبهة والمتبنة)

الوفيات (المتبنة)		الحالات المثبتة		كافة الحالات المشبهة والمتبنة	
التراكمي	الجديدة (آخر 24 ساعة)	التراكمي	الجديدة (آخر 24 ساعة)	التراكمي	الجديدة (آخر 24 ساعة)
20	0	645	23	4692	98

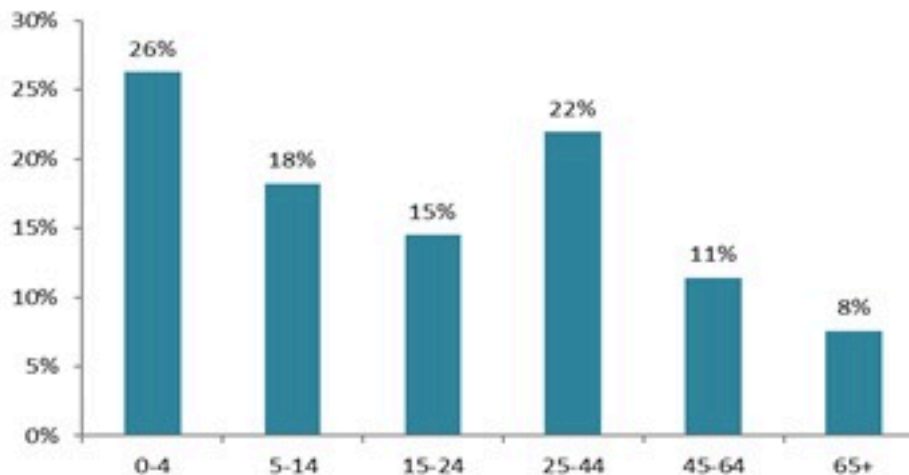
حسب تاريخ الإبلاغ
(للحالات المثبتة والمتبنة)



استعمال الاسرة الاستشفائية
(للحالات المثبتة والمتبنة)



حسب الفئة العمرية
(للحالات المشبهة والمتبنة)



حسب البلدة
(للحالات المثبتة)



Cholera Surveillance Report

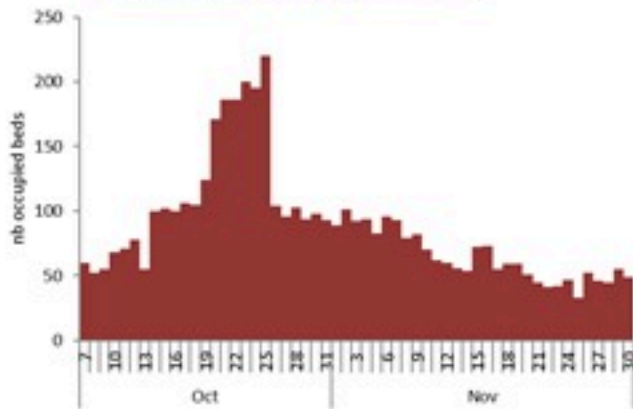
1 Dec 2022

Call Centers
 1760 (Red Cross)
 1787 (MOPH)

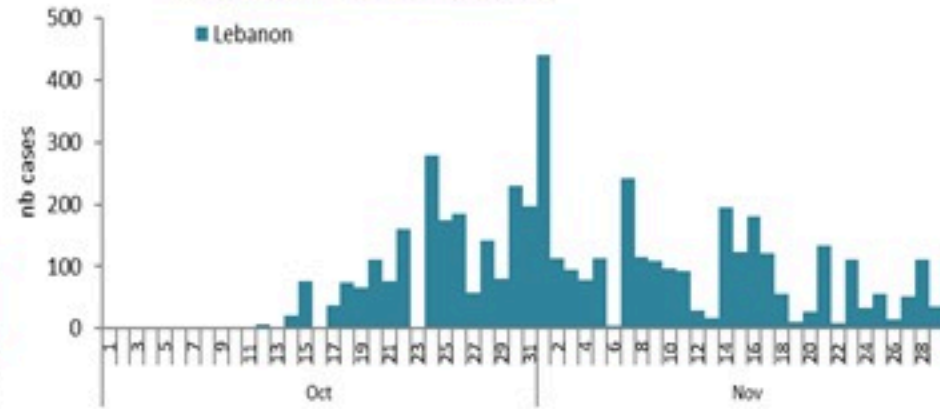
All cases (suspected and confirmed)		Confirmed Cases		Deaths (confirmed)	
New (past 24 h)	Cumulative	New (past 24 h)	Cumulative	New	Cumulative
98	4692	23	645	0	20

Cholera Vaccination Campaign (Cumulative of delivered doses up to past day)	
Past day	Cumulative (corrected)
13,110	457,251

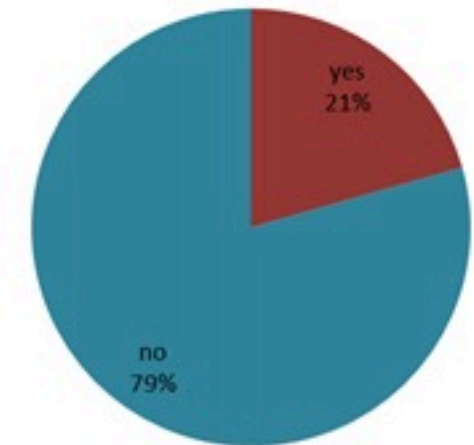
Occupied hospital beds
(suspected and confirmed)



By date of report
(suspected and confirmed)



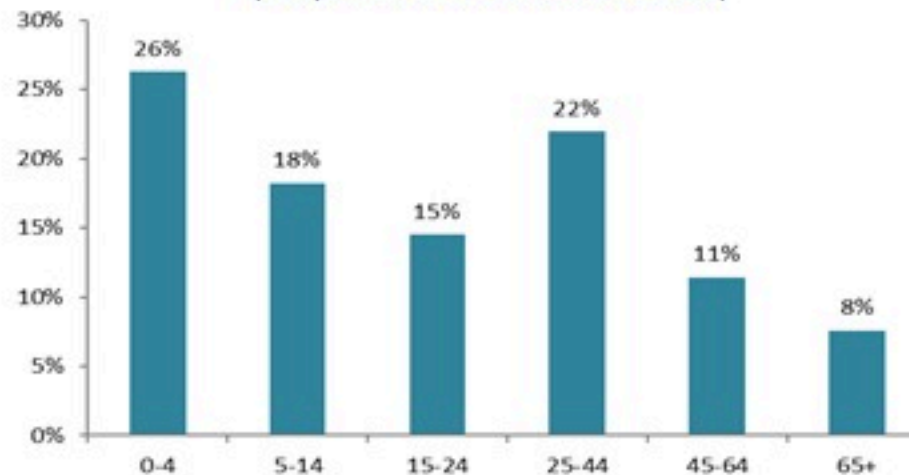
By Hospital Admission
(suspected and confirmed)



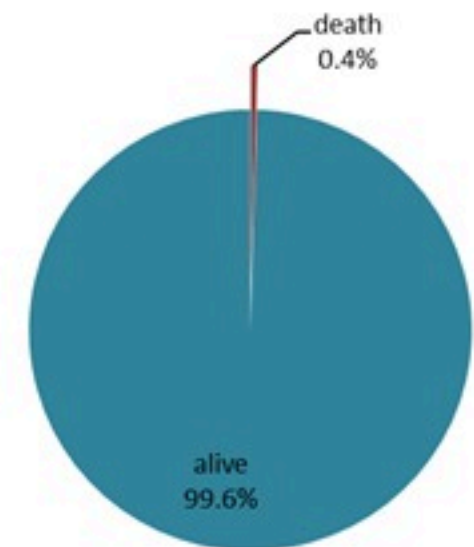
By locality (confirmed cases)



By age group
(suspected and confirmed cases)



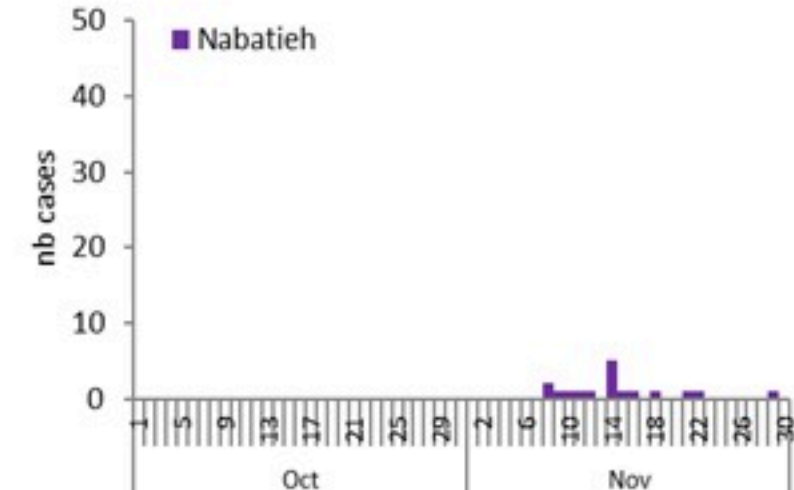
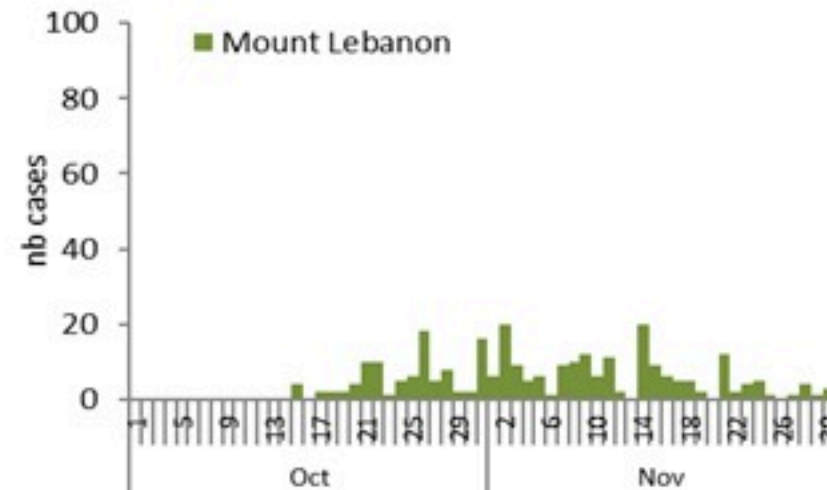
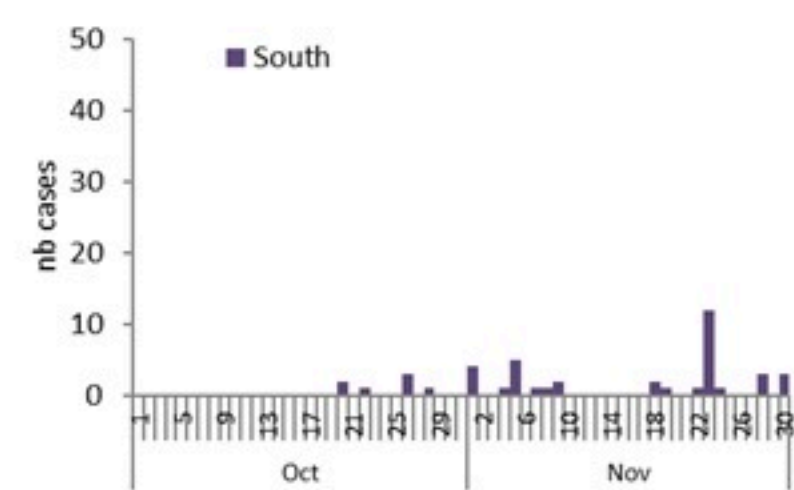
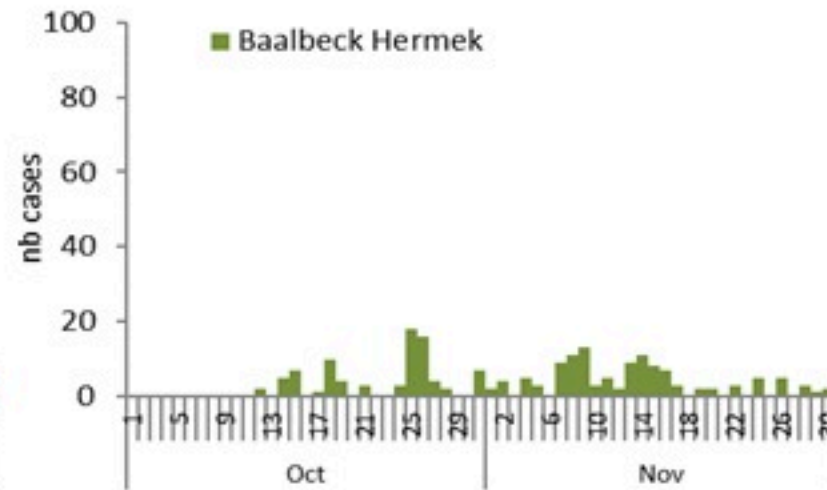
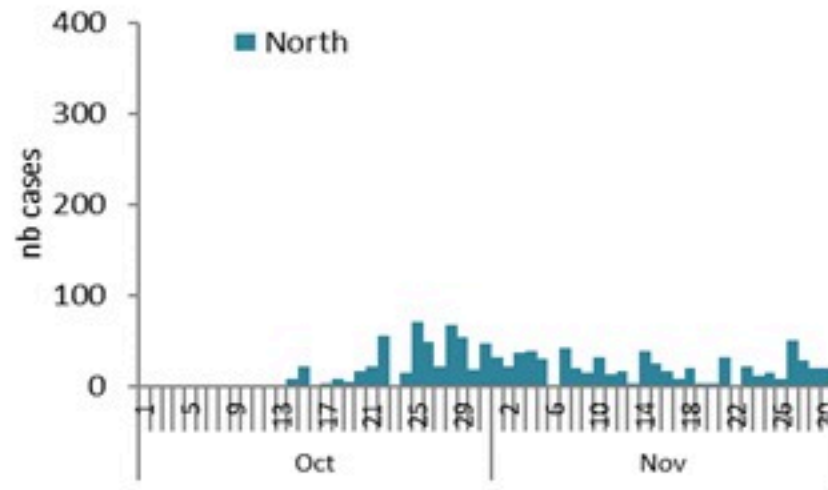
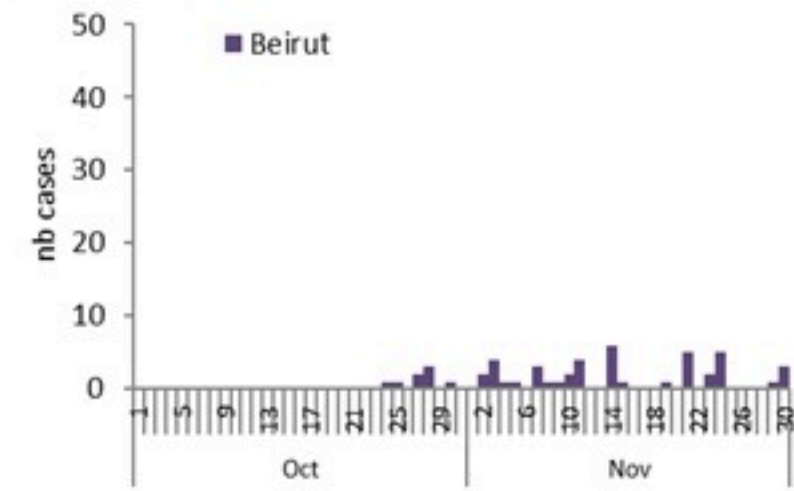
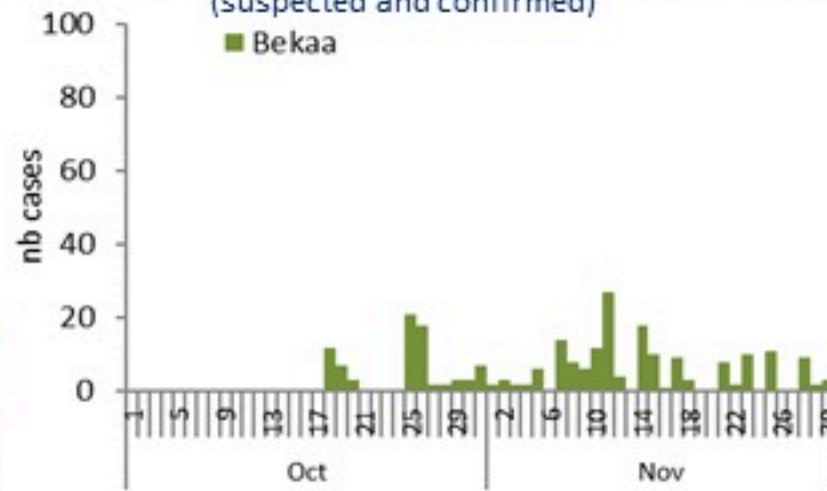
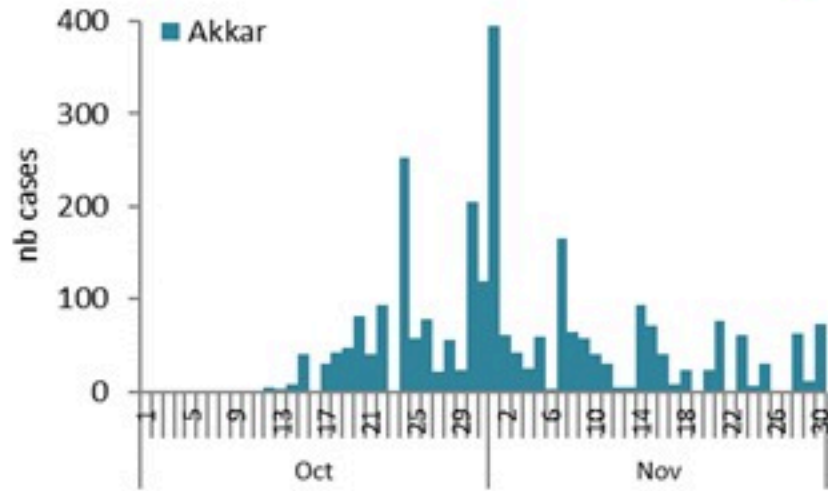
By Outcome
(suspected and confirmed)



Cholera Surveillance Report

1 Dec 2022

Epicurves by date of reporting by province (suspected and confirmed)



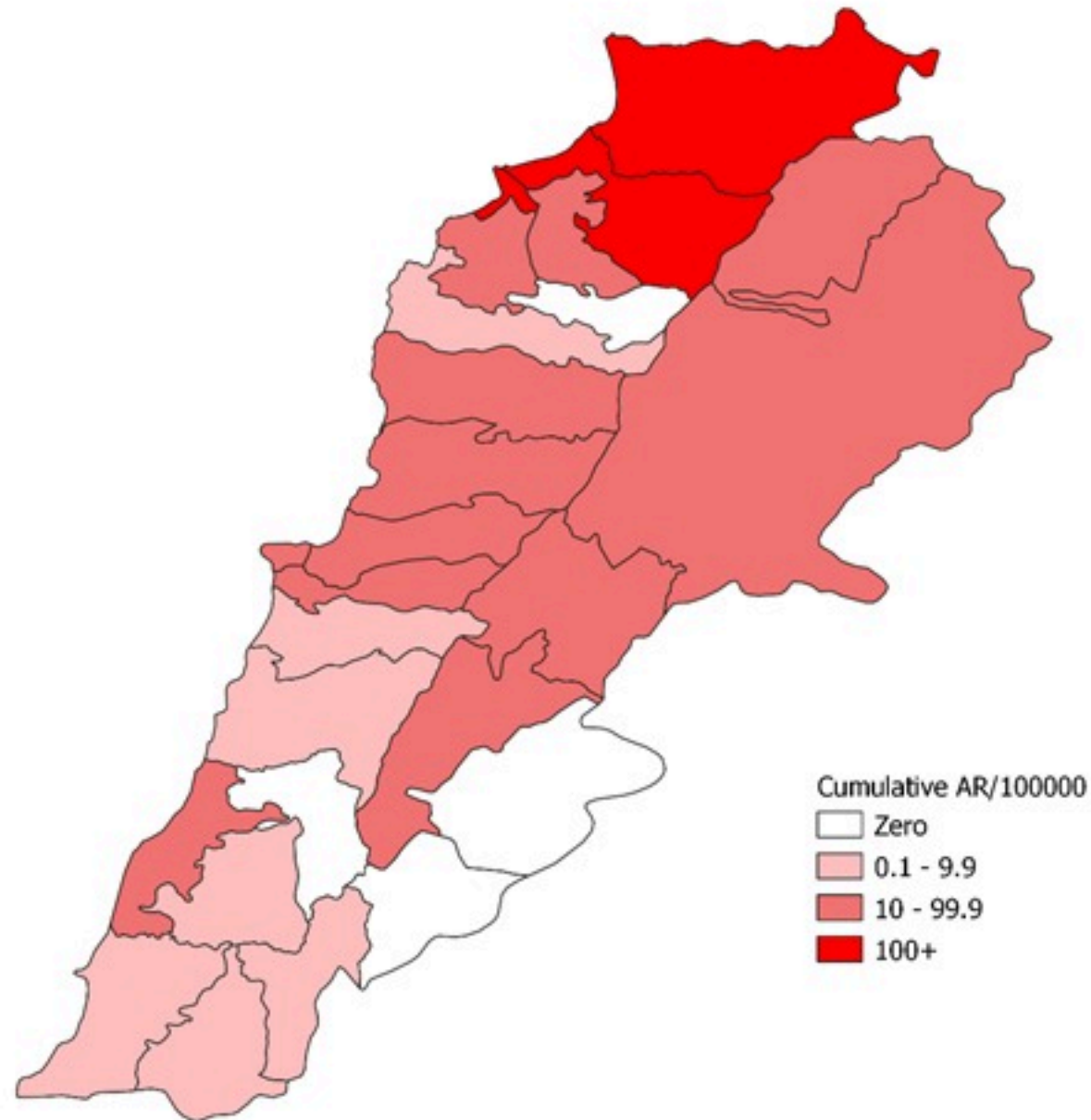
Cholera Surveillance Update

1 Dec 2022

4

Cumulative Attack Rate per 100,000 (suspected and confirmed)

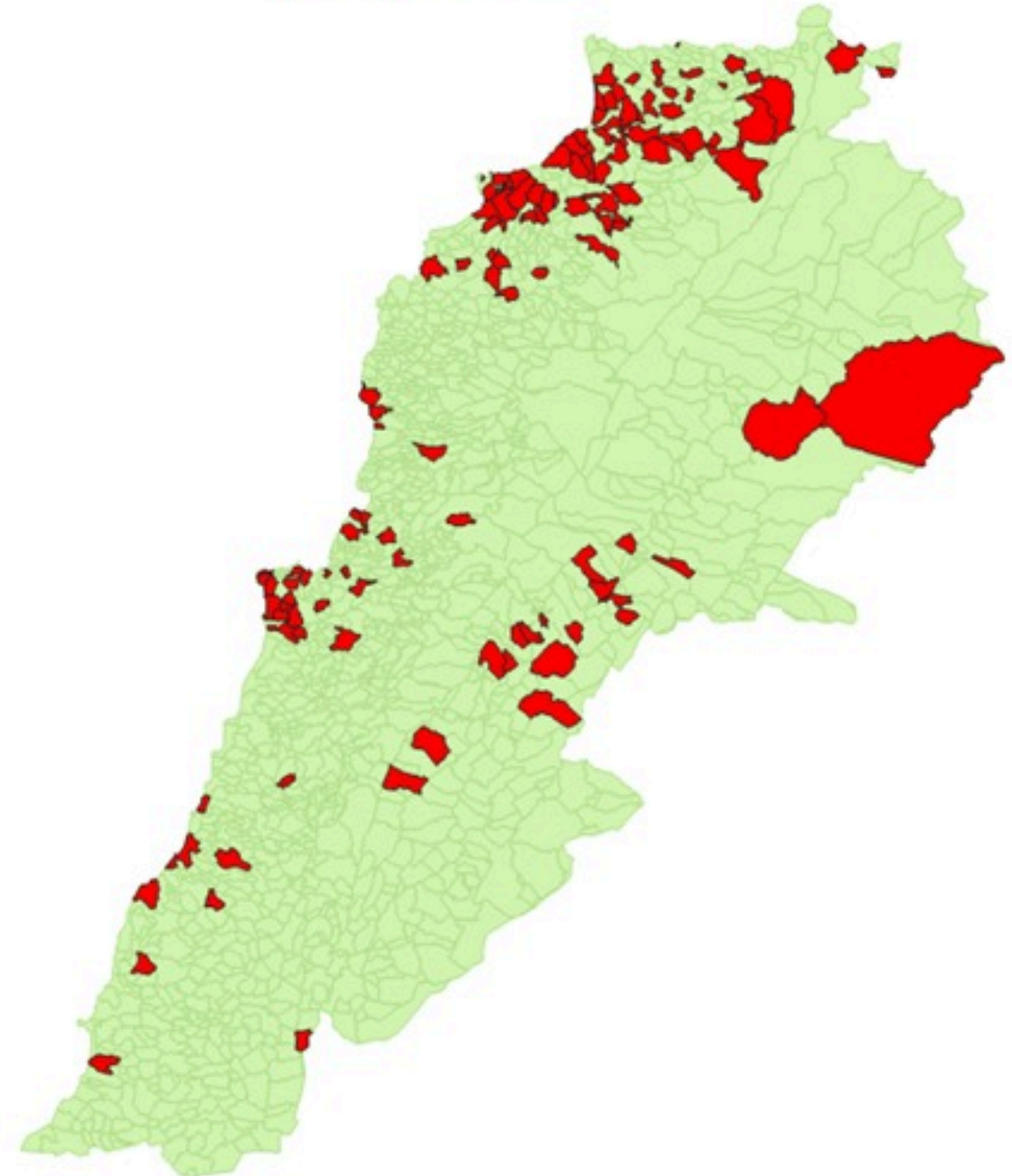
نسبة الحدوث التراكمية لكل مئة ألف نسمة (الحالات المشتبهية والمثبتة)



Cholera Surveillance Update

1 Dec 2022

By locality (confirmed)
حسب البلدة (المتبنة)



Figures in table are subject to modification following updates and data correction

Locality	cases	Locality	cases
Akkar Atika	1	Kesrwan	1
Amayer/Duadi Khaled	1	Aintoura	1
Arqa / Marlayet Haddara	2	Bailounch	1
Bebnine / Baddoua	158	Bqatouta	7
Beit Hajj/Koucha/Khreibit Jindi	3	Ghazir	2
Berqayel	6	Jounieh Ghadir	4
Bezbina	1	Jounieh Sarba	4
Bireh	1	Yahchouch	1
Bqerzla	1	Zouk Mosbeh	3
Cheikh Ayache / Chir Hmairine	3	Koura	1
Dahr Qambar /Hokr Qatfeh	2	Aaba	1
Dinbou	1	Aatsdiq	1
Fneydek	1	Barsa	1
Halba	1	Bsarma	1
Hayssa	1	Dahr Ain / Ras Masqua	1
Hoculch	3	Rechdibbine	1
Jdeidat Qaytee	3	Kfar Aqa	1
Kfar Harra	4	Marjeoun	1
Kfar Melki	1	Metn	1
Khane Hayat	1	Bikfaya	1
Khirbet Char	2	Broummana	1
Kneisset Hnalder	1	Bsallim	1
Kouachra	1	Daoura/Borj Hammoud	2
Kouekhat	2	Mansourieh	3
Machha	2	Zalqa	1
Majdala	1	Minieh Danieh	1
Memneaa	1	Aadoua	1
Mhamarah / Nahr Bared / Abdeh	20	Assoun	4
Minlara	3	Ain El Tineh	1
Mqyatea	1	Bahsa	1
Ouadi Jamous	10	Bakhaaoun	4
Qaabrine / Tal Hayat	7	Bhanine / Zouk Bhanine	7
Qbalyat	1	Btermaz	4
Qlayat Akkar	2	Douralya	1
Qobet Chamra	17	Kfar Chellane	2
Rahbeh	1	Kfar Habou	1
Ransiyeh / Deir Dalloum	1	Merkabta	2
Saadine	4	Minieh	18
Tell Abbas Charqui	2	Ouatlyeh	1
Tieil	1	Qattine	3
Zouq Haddara	1	Rihanieh	35
Zouq Hosnieh	3	Sir Dannieh	5
Aley	1	Salda	1
Hay Selloum/Chouefat	1	Aangoun	1
Baabda	1	Ghazieh	2
Ain Roummaneh	1	Kharayeb	3
Borj Brajneh	3	Salda	1
Ghbayreh/Chiyah/Sabra	2	Sarafand	1
Hadath	3	Sour	4
Haret Hreik	1	Deir Qanoun Ain	4
Kfar Chima	1	Baddawi	16
Mreijih	1	Mina	7
Baalbeck	27	Qobbah	21
Arsal	2	Tripoli Bab Fami	1
Kfar Dabache	2	Tripoli Gardens	1
Khodr	2	Tripoli Haddadine	1
Temnine Faouqa	1	Tripoli Nouri	1
Temnine Tahta	9	Tripoli Souayqa / Jtraïn	3
Younine	1	Tripoli Tabbaneh	20
Batroun	1	Tripoli Zeitoun	14
Beirut	2	West Beqaa	1
Achrafieh	1	Kefraya	1
Ain Mraissch	1	Saghbine	1
Hamra	1	Aali Nahri	2
Mdaouar / Mar Mikhael	1	Bar Elias	2
Msaitbeh	1	Dalhameh	1
Chouf	1	Haouch Mandra	1
Zaarouriyeh	1	Hawch Omara	7
Jbeil	1	Majdal Anjar	1
Amchit	1	Qob Elias	9
Ehmej	1	Raalit	11
Jbeil	1	Saadnayel	11
Mastita	2	Taalabaya	2
		Zahleh Maalaka	2
		Zghorta	1
		Aalma	1
		Ardeh	1
		Kfar Dilaqous	2
		Mejdalya Zghorta	6
		Miriata / Raour	3
		Sebaal	1
		Zghorta	4